

# HOLLY TIPS

## To go with the Free Fast Flowers Quilt Pattern

(from Quilts & More Magazine)

*Pls Note: Kristine's Fast Flowers kits have the correct amount of fabric to follow my preferred methods of construction written on these Tip Sheets. Her kits have more fabric in them than the free pattern states you need, because I figure if I can get better results doing things a better way, so can you.*

For more information on ordering Kristine's kits, pls go to: [personalizedbydesign.com/fastflowers.html](http://personalizedbydesign.com/fastflowers.html)  
Kristine is making all of the kits for the shops who are participating in the Brownie Points Blog-Along-Athon!

I'd like to credit **Cheryl Winslow** for helping me over the years with many extra tips & information on the best way to put a quilt together. Like myself, Cheryl began her love of fabrics by making garments not quilts; so we could share alot of insights about the way a dressmaker would put something together. This kind of knowledge I fear will become all but a lost art, as Home Ec & Girl Scout sewing badges become a thing of the past. So it's increasingly important that we hand down our experiences (good & bad) to the next generation of quilters, don't you think?

If you'd like to see some of the other Tip Sheets that Cheryl Winslow & I collaborated on, pls go to:  
<http://hollyholderman.typepad.com/tips/>

*I don't like to leave much to chance when I am trying to follow a pattern. Here are some of the things that I felt needed to be emphasized after I read the FREE Fast Flowers quilt pattern from Quilts & More magazine.*

### The Best Way to Fussy Cut the Flower Panel

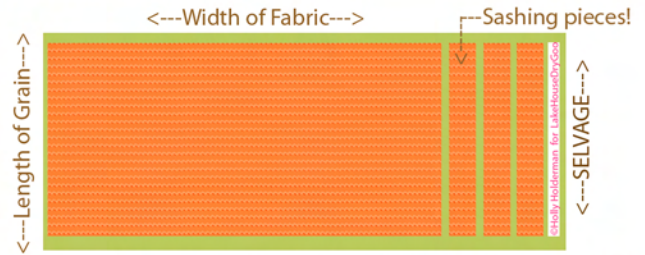


Rough Cut at the Dotted Lines!  
(look closely, they are there to help!)

Look carefully & rough cut each square along the dots. Note that the dimensions of the squares will vary a bit. (That is due to the way the fabric is finished, it gets stretched a little --it's unavoidable, don't stress). What you need is for your finish cut flowers to be in the center of a 10-1/2" square. To do this, fold each square into quarters to find the center, mark this spot with your chalk pencil and measure out 5-1/4" from the center in all 4 directions. Using the corner of a 12" clear ruler, align the edges of your ruler with the 5-1/4" marks. Mark 2 edges of your square at a time with a chalk pencil. Repeat to make your 10-1/2" square. **Hint:** if you don't trust your eyes to check your work, use your ruler to make sure the dimensions on the left & right are the same, then check the top & bottom dimensions too. Still not sure? DON'T CUT! Instead, drive to your nearest independent quilt shop and ask for help...It's why we cherish them.

### Let's Get Our Terms Right

page 1 of 2



Cross-Cut means cutting perpendicular to a stripe (or Ric Rac)  
Length of Grain means parallel to the Selvage

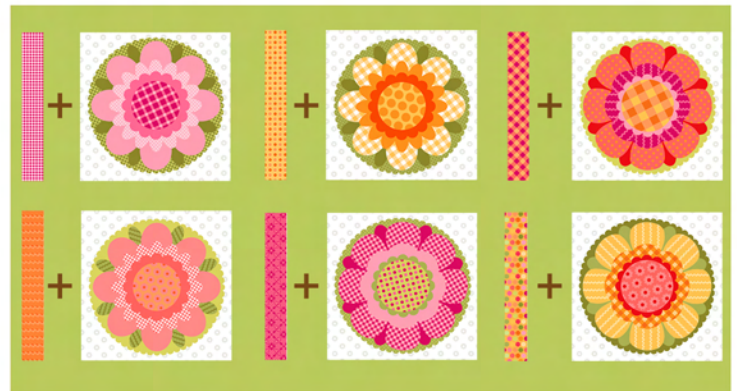
### Making the Best Blocks

My suggestion is to cut all of your sashing pieces on the Length of Grain.

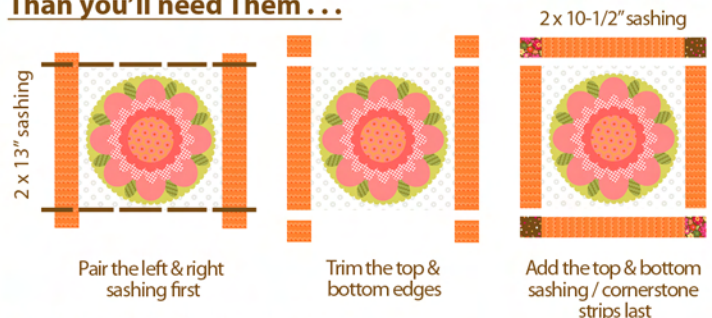
Never underestimate the differences the way fabric stretches. If the longer dimension of your piece is cut parallel to the Length of Grain (aka LOG), it will be much less stretchy as you sew that longer seam. However, if the long dimension is cut along the Width of Fabric aka WOF, it will tend to stretch. That is not such a big deal when making a pillowcase, but on a quilt top made of many small peices of fabric, your end result might not be as flat as you'd like (and then it will be a nightmare to quilt), or as "square" as you'd like at when you are finished. This will cause challenges for whoever does the quilting, whether it's by hand or by a long arm machine.

### Pair Your Fussy Cut Flowers with Sashing Fabrics!

Make six piles of flowers with their matching sashing fabric before you start to pin & sew your pieces together. Pay careful attention to matching each of the 6 flower styles (in the panel fabric) with it's coordinating sashing fabrics. If you don't coordinate sashing & flowers before you start to sew, you may end up with an unbalanced layout...and it might be really frustrating for you.



### Rough Cut Half of your Sashing Strips a Little Longer Than you'll need Them . . .



### Double Thick Binding Lasts Longer

Pls Note: 2-1/2" binding strips yield a 1/2" wide (double layer of fabric) binding. These strips are cut on the WOF. Sew 8 WOF binding strips end to end. Fold in half lengthwise & press. Align the raw edges of your binding with the raw edges of your quilt top. Pin & sew these layers together. Fold the folded edge towards the back of the quilt, sewing with a blind stitch just over the machine stitch line.



# HOLLY TIPS

## To go with the Free Fast Flowers Quilt Pattern

(from Quilts & More Magazine)

### Making the Best Borders

My suggestion is to cut all of your border pieces on the Length of Grain (aka LOG)

The stretchiness of your fabric is even more difficult to work with as your quilt pieces get larger. This means that the outside borders of your quilt top should be cut on the LOG wherever possible.

*Notice how straight the quilt is on page 2 of the Fast Flowers Free Pattern, (no wavy or crooked edges)! This is the result of having cut the border pieces along the LOG. Doing things a better way can make up for experience and skill -- take it from me!*

If the border is cut along the Width of Fabric (aka WOF), applying them to the main part of the quilt requires much more fabric handling experience and skill. This is because WOF strips of fabric are very stretchy.

I strongly suggest that you not cut the border pieces to the exact lengths listed in the Fast Flowers Free Pattern, because you might come up short if your piecing isn't perfect.

You can get six--6-1/2" wide border strips out of your 2 yards of fabric easily if you follow my Cutting Diagram.

With a little extra care when cutting, you can get 3 pairs of matching borders out of the fabric supplied in Kristine's kit. Use the A pieces for your top & bottom borders. Then join B-1 to B-2 & C-1 to C-2 to make your left & right borders. (see diagram on the right)

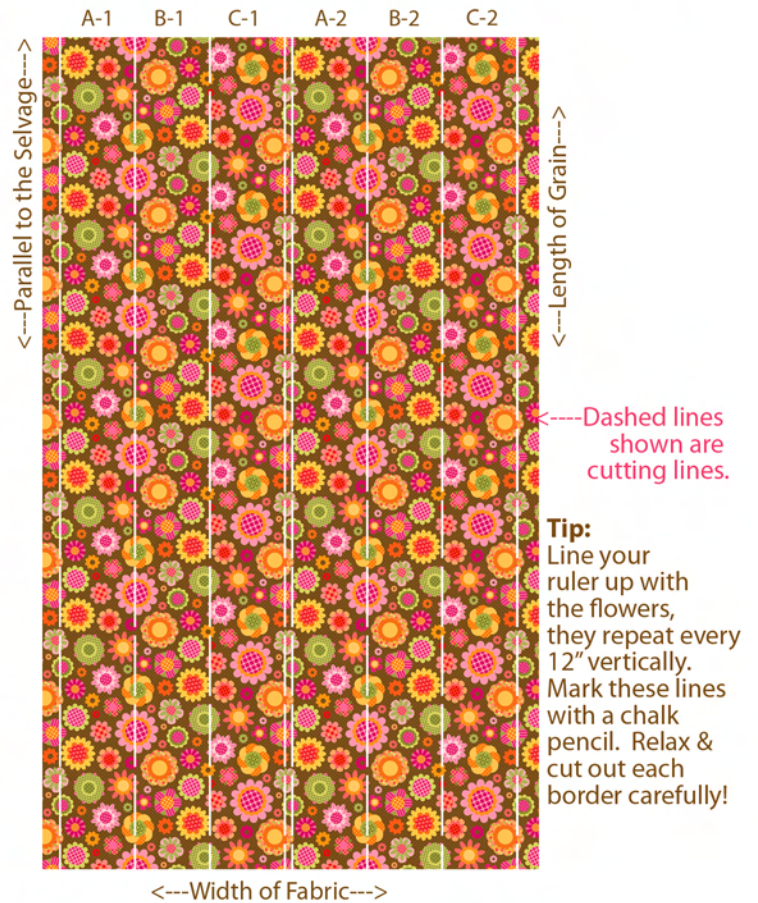
You will have plenty extra to be able to match the repeat at the joint seam, which can be made with a straight or bias (aka diagonal seam).

Using the B & C pieces that you have cut from the full length of the fabric, pin & sew your pieces together, end to end to make your left & right borders. \*Stagger your seams when pinning them to your quilt body. (see diagram on the right) Allow a little extra border fabric at the top & bottom; then pin the borders to the left & right sides. Sew these long seams carefully, trimming off the excess to "square off" your new quilt top & bottom edges. Repeat these steps with the top & bottom border pieces you have left.

**Tip:** \*If you stagger the placement of your seams on the left & right side borders, you'll hardly know that they are there in your finished product. (see diagram on the right)

Pls Note: You will notice that you need to cut & apply the Ric Rac Stripe Inner Border in a similar manner to the Brown Floral Outer Border. Remember that LakeHouse stripes are printed across the WOF, so you will cut them on the LOG. Kristine's kits allow you 1 yard of fabric to work with, so you will need to cut less strips, and you will have plenty of extra fabric so that you can match the ric rac color order when you sew them end to end.

### Cutting Diagram



### Cut out your borders carefully!

