

Really Great Sashing!

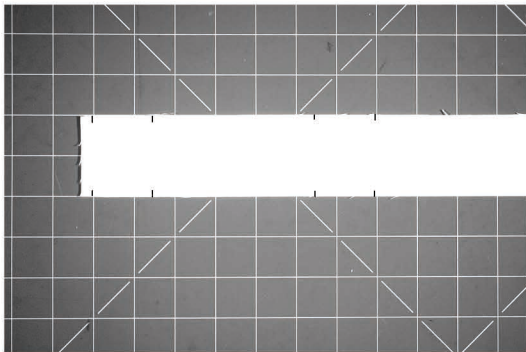


diagram i Mark block and perpendicular sashing seam lines on connecting sashing

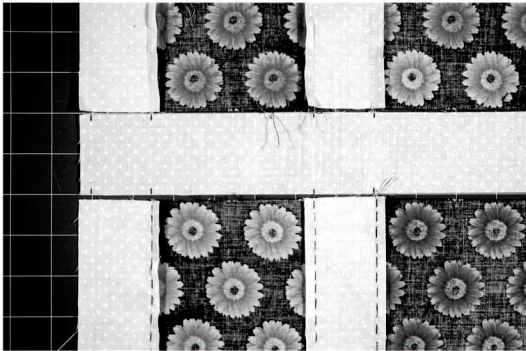


diagram ii Block and Sashing Rows connected with Intermediate Sashing, notice that the seam allowances are pressed away from the light sashing...

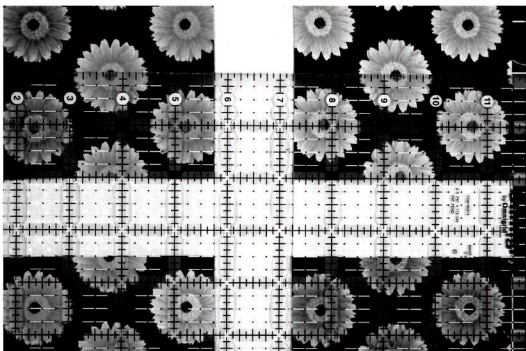


diagram iii Work is more “true & square” and there’s no shadowing in the sashing!

Conventional wisdom is that we cut sashing “cross-grain”, probably because in many cases you need to purchase less fabric to make the quilt. But cutting sashing cross-grain is cutting with the most stretchy, unstable direction of the fabric! Sashing that is cut “length of grain” aka “LOG” (parallel to the “selvage”--the woven edges of the fabric) is the better way to go. This is especially true for narrow sashing. The “LOG” is much more stable and easy to handle.

Here are some additional tips to make your sashing come out great every time:

1. Adjust your fabric purchase to make your “LOG” sashing, it will be well worth in in the final product. Figure out the longest continuous sashing your project will need, plus a few extra inches for seam allowances, remembering to add extra length if there is any need for design repeat /motif matching. Always cut the longest sashing strips first! Count up the other shorter sashings, to make sure that you will have enough space in the remainder of the width of fabric aka “WOF” to make all of the “LOG” of sashing that you need. Cut the shorter sashing pieces after all of the “LOG” cuts are made.

2. Mark the Intermediate or “connecting” Sashing with tick marks for accurate block and perpendicular sashing placement. Remember to add the extra 1/4” seam allowance at the ends of your Intermediate sashing when measuring out your dimensions, whether starting with the perpendicular sashing or first block’s dimension. **See diagram i** Tick mark dimensions should match the finished block size(s) as well as the finished sashing size(s) of the row you are attaching. **See diagram ii**

This method will virtually eliminate the twisting or “torque” so commonly found in sashed quilts! **See diagram iii** Your resulting quilt top will be more square...and therefore more flat...therefore easier to press...and easier to quilt! And “Wa-La”, a much more beautiful end result! The more accurate you are at every little step, the better off you’ll be at the end of the project. Remember, the secret to a well constructed quilt is all in the fabric handling!

All Tips by Cheryl Winslow, as told to Holly Holderman.

We are pleased to bring to you in depth tips from our sample maker and quilter Cheryl Winslow. With a background in garment sewing & construction, many years of quilt making and a thriving Long-Arm business, Cheryl is our LakeHouse “Go-To” gal. Cheryl specializes in the high-end quilting and piecing, for more information on working with her, visit Cheryl’s website at:

www.starshinequilting.com